



HAWTHORN ACADEMY

SOUTH JORDAN CAMPUS

11400 S. 1437 W.
South Jordan, UT

SAFE ROUTES UTAH PROGRAM

The South Jordan Campus of Hawthorn Academy is located at 11400 S. 1437 W. in South Jordan. The campus will serve approximately 650 students in grades K-6.

Most students will arrive and depart in carpools or guardian vehicles. Patrons are asked to follow the schools designated Drop Off and Pick Up procedures to ensure students safety and the efficiency of traffic flow through the area.

Traffic Controls

There are various stop, yield, school crossing, and speed zone signs throughout the subdivisions and main thoroughfares on the roads that are access routes. Parents who choose to allow their students to walk or bike to and from school will assume responsibility for all risks involved. Travelers should obey all traffic lights, laws, signs, and signals and cross carefully and legally to enter and exit school grounds.

It is recommended that school zones be established along 1300 W. north of 11400 S. and south of 11400 S. School zones should also be established to the west of the school on 11400 S. and to the east of the school on 11400 S. up to the light at 1300 W.

Hazards and Sidewalks

Parents and students who decide to walk or bike to and from school should follow the safest routes possible using sidewalks or crosswalks to reach nearby residential neighborhoods. Parents who choose to allow their students to walk or bike to school are encouraged to travel these routes with their children to determine the safest route possible.

School Crosswalk

Currently, the closest crosswalk to the school is located at 1300 W. 11400 S. where there are crossing guards in place before and after school.

Caution should always be used when walking along the sidewalk of a busy road.

The following crosswalk improvement is proposed:

- *A cross walk put into place for students going east to west across 1300 West on the north side of the intersection of 11400 S. and 1300 W. Students will utilize the cross walk in place on the west side of 1300 W. from north to south and vice versa for crossing 11400 S. These crossings will be used as the primary means of pedestrian and bicycle traffic for crossing the road and accessing the school.*

Bicycle Routes

Bicycle routes will be the same as the outlined walking routes. Students riding their bicycles should stay on the extreme far right of the road, when necessary, allowing vehicle traffic the right of way as much as possible. Where available, students should ride on sidewalks as much as possible.

Routes to School

Students living and walking from the **southeast (section 1)** of Hawthorn Academy should walk towards 1300 W. and walk north. Use the crosswalk at 11400 S. if located on the east side of the road. Students will then walk west on 11400 S. and access the school using the walkway located on the east side of the school parking lot. Students will follow the walkway along the side of the parking lot until they reach the sidewalk at the front of the school. They will then turn west on the sidewalk and go to the front door of the school.

Students living and walking from the **southwest (section 2)** of Hawthorn Academy should walk east on 11400 S. on the south side of the road. Students will then access the school using the walkway located on the west side of the school parking lot. Students will follow the walkway along the side of the parking lot until they reach the sidewalk at the back of the school. They will then turn north on the sidewalk and go to the front door of the school.

Students living and walking from the **northeast (section 3)** of Hawthorn Academy should walk towards 1300 W. and walk south. Use the crosswalk at 11400 W. to get on the west side of the road. Use the crosswalk to cross 11400 S. to the south side. Students will then walk west on 11400 S. and access the school using the walkway located on the east side of the school parking lot. Students will follow the walkway along the side of the parking lot until they reach the sidewalk at the front of the school. They will then turn west on the sidewalk and go to the front door of the school.

Students living and walking from the **northwest (section 4)** of Hawthorn Academy should walk towards 11400 S. and walk east. Use the crosswalk to cross 11400 S. to the south side. Students will then walk west on 11400 S. and access the school using the walkway located on the east side of the school parking lot. Students will follow the walkway along the side of the parking lot until they reach the sidewalk at the front of the school. They will then turn west on the sidewalk and go to the front door of the school.

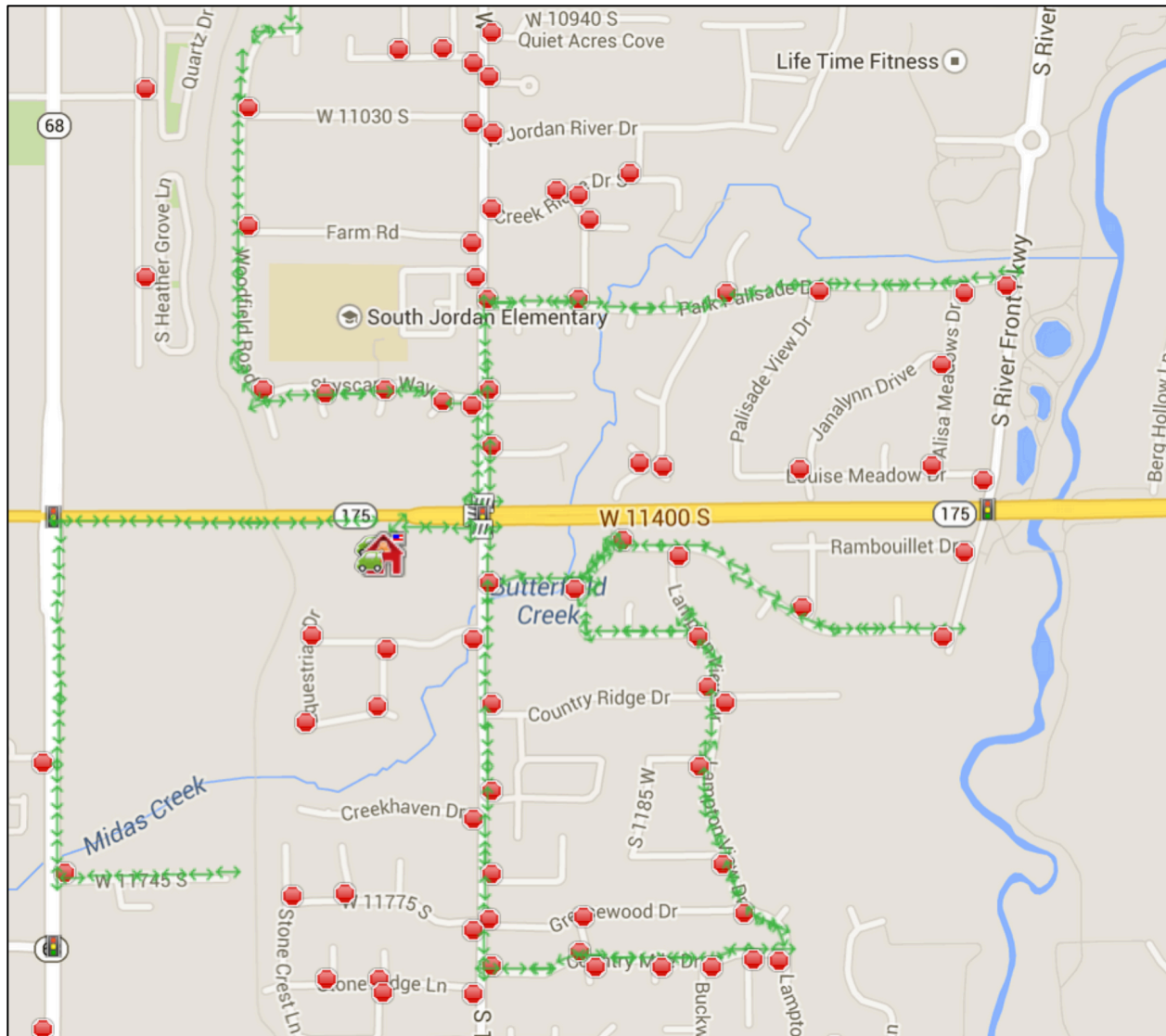
Overview

It is estimated an average of 10% of the students will walk or bike to and from school. Students that walk or bike are encouraged to follow the below maps outlining safe walking routes and always use the sidewalk.

Minus the traveling routes outlined above, the school advises against students walking or biking to and from school, especially during heavy traffic time periods on the roadway.

Note that the speed limit along 11400 S. is 45 mph and this makes the road in front of the school and at the designated crosswalks a high-speed, high-volume roadway and the area is not a designated School Zone. We ask that parents not park in this area to increase parking lot visibility and student safety.

These routes are for the immediate area around the South Jordan Hawthorn Academy Campus and are not exhaustive. Please contact the school for additional information regarding safe traveling routes.



Route Key

↔ Safest Walking Route

Icon Key

School

Crosswalk-Vertical

Stop Sign

Crosswalk-Horizontal

Traffic Signal

Student Drop-off/Pick-up

View the map online at:

<https://www.saferoutesutahmap.com/map/school-maps/0ayGe80LQAWDHwlpBqPQGw>