

BRIDGE BULLETIN

SEPTEMBER 12, 2020



MESSAGE FROM THE PRINCIPAL (AKA ACADEMIC DIRECTOR)

Here we are, cruising into Fall at warp speed! Your kids are troopers. They are juggling a new school with a completely different learning model than they have ever had in the past, navigating a new school year after SIX months without the daily, organized structure and demands of being back in an educational setting, PLUS they are navigating the added issues that accompany our quest to mitigate a COVID19 outbreak including "masks up", continual hand washing and/or sanitizing, wiping down tables, computers and materials, all while trying to maintain as much social distancing as possible. So, please give them a pat on the back and remind them that SOMEDAY we will all be back to normal - sitting with our friends at lunch, playing mask-free at recess, and free of the constant nagging of "masks up - did you sanitize?".

Thank you once again for allowing us to educate your students. We know you have tons of options and feel honored that you have chosen Bridge for your family.

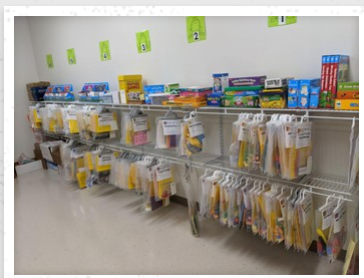
Have a fabulous weekend and we will see you on Monday!

Lani Rounds

FREE BREAKFAST & LUNCH BEGINS MONDAY, SEPTEMBER 14 - CLICK FOR MORE INFORMATION

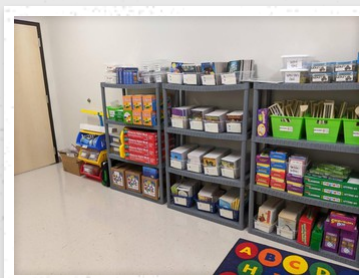
BREAKFAST IS SERVED

Yes - breakfast is served at Bridge, and beginning Monday, it is FREE for ALL students. However, breakfast is ONLY served 7:45 am - 8:18 am. If your child arrives in the breakfast line AFTER 8:18 am they will not be able to eat breakfast. Please know that IF you want your child to have breakfast at school they must arrive EARLY enough to sanitize, walk through the front doors, down the hall, and into the gym and be in the breakfast line by 8:18 am. We do not want hungry kids, but we also need to provide the amazing food service peeps the necessary time to clean up after breakfast and begin preparing a delicious lunch for your students.



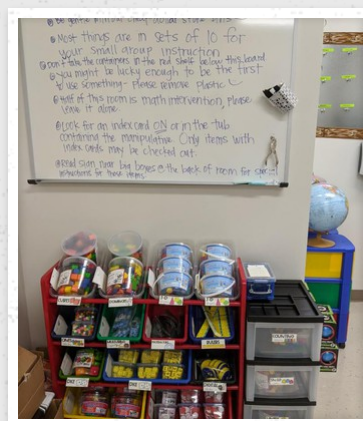
STATION ACTIVITIES

Our teachers can choose from a huge selection of ready-to-go station activities, aligned with core standards. The selections continue to grow as we add more activities weekly.



MANIPULATIVES

Our manipulative closet is bursting with lots of hands-on items for your students to use during small group instruction and stations.



MANIPULATIVES

Just another peek at some of the manipulatives teachers can check out for our students to use.

Please take some time to read our Bridge Family Handbook. You can find it on our webpage under Policies & Procedures. You can also access it using this link

<https://vahara-o2-public.s3.amazonaws.com/media/47633/Bridge-Family-Handbook-8.7.2020.pdf>

STUDENT BIRTHDAYS AT BRIDGE

This information is in our Family Handbook, but, based on the numbers of treats that have been sent to school, we thought we better address Bridge's Student Birthday procedures.

Students may not bring treats or prizes to school for their birthday. Parents are encouraged to come to lunch on their child's birthday and to celebrate with their child. However, parents may not bring food or other items into school for other children besides their own.

NOTE: Due to COVID restrictions, parents and non-essential visitors are not allowed in the building for lunch, volunteering or other visits.

CHECKING STUDENTS IN & CHECKING STUDENTS OUT DURING SCHOOL HOURS

School begins at 8:30 am. - That's when students belong in their classroom, ready to learn. Teachers pick students up from morning supervision at 8:25 am. In order for your student to get to class on-time they must be through the front door, sanitized and heading to class by 8:25 am. Teachers take attendance at 8:30 am. Students arriving at 8:30 or later are provided a LATE SLIP to take to class. This late slip lets the teacher know that the child has entered through the office and the office will update their attendance to "present". If your child arrives **later** than 8:45 am you **MUST** bring them into the office and check them in.

Checking Students Out of School - Please know that anyone coming into the school to check your child out **MUST** present ID and be in Aspire as an authorized person. Many of you have entered emergency contacts in Aspire but have not selected the little green arrow next to the contact's name indicating this person is allowed to check out your student. If you need help with Aspire, please call the office (801)499-5180 and our office staff can help you with your emergency contacts.

NOTE - if your child is in BASE and you wish for them to leave prior to 4:30 pm, it is still a "check out" and ID is required.

BASE - BRIDGE AFTER SCHOOL ENRICHMENT

Yes - we still have BASE although the format has changed in order to assist us in the event that "contact tracing" is needed. Instead of students going to a different BASE class each day,

students go to a grade-level BASE class. The class is always in the same location and the activity depends on the grade level.

If your student has signed up for BASE, he or she is on a list. Students on the list remain in their classroom after school and are escorted to BASE at 3:35 pm. If your student is on the list and you do NOT want them to attend on a specific day, you MUST call the office that day and let them know that your student will not be attending or your student will be sent to BASE. We have lots of BASE helpers at school who are all looking at the "list" and escorting the wandering kids to the correct place. Many, many students state, "I don't know if I have BASE - I need to call my mom." Or, they tell us, "I don't want to go to BASE, I need to call my mom to pick me up." Remember, IF your child is signed up for BASE, that is where we take them - this is for their safety to ensure we don't have any wandering kids outside just waiting for their parent to pick them up.

Our BASE Session #2 begins in October. The form to sign-up will be available on our website on September 21 and sign up will continue until September 25. For Session #2 we will continue with the grade level BASE classes with different activities each week.

The BASE page on our website is:

<https://www.bridgecharter.org/b-a-s-e>

If you have questions about BASE please contact the BASE Coordinator [Sara Tucker](#)



LOST AND FOUND BIN

Our lost and found bin is located in the front office. Most students know where this is and many visit it daily. Each day the bin is filled with jackets, lunch boxes, water bottles and random toys. On Friday, we glove up and put the items on a table under the front portico so you or your student can gather up their belongings. Friday after school, we bag everything up and donate the items to a donation facility. Many items look alike - please make sure your student's name is on their water bottle and their lunch box. Because of COVID concerns our staff do NOT rummage through items looking for student names to return the items. However, the names will help you and your child to more easily identify what belongs to them.

PROPER BATHROOM ETIQUETTE TO DISCUSS WITH KIDS

I debated whether or not to use a certain emoji while writing this paragraph but professionalism won out.

PLEASE PLEASE PLEASE talk to your male students about proper bathroom etiquette. Talk to the girls too, but most of the troubling issues involve the boy's bathroom.

The DOs while in the bathroom - go into the proper restroom (boys/girls), get your business done, wash your hands (20 seconds please) and return to the classroom or cafeteria.

The DON'T's while in the bathroom - sitting or standing on the urinal, using feces as finger paint, climbing under the stalls, using the urinal splash guard as a toilet stopper, unrolling the entire roll of toilet paper and sticking it in the toilet, etc. Many of these are acts of vandalism and are creating unsafe conditions for other students.

At the direction of administration, teachers are implementing more stringent bathroom rules including, how many students can leave the classroom at a time, setting a timer, and writing down names and times of those who leave the class to go to the restroom. In addition, our cleaning staff will be performing more restroom checks throughout the day to narrow down the time the vandalism occurred and matching it with the students who were excused from class to use the restroom during that interval. Using our these procedures and our limited CSI skills we will be better prepared to help identify the culprit(s).



PARKING LOT AND PEDESTRIAN SAFETY

A huge shout out to the many, many families who are following the safety rules, such as only using the crosswalk, being patient, pulling all the way forward, remaining cell phone free while walking and driving, and showing genuine concern for the safety of our students. One would think that slowing down and being patient would INCREASE the parking lot clearing time but experience has shown that when we are kind, patient and alert not only are our kids kept safe, but the time to clear the parking lot decreases.

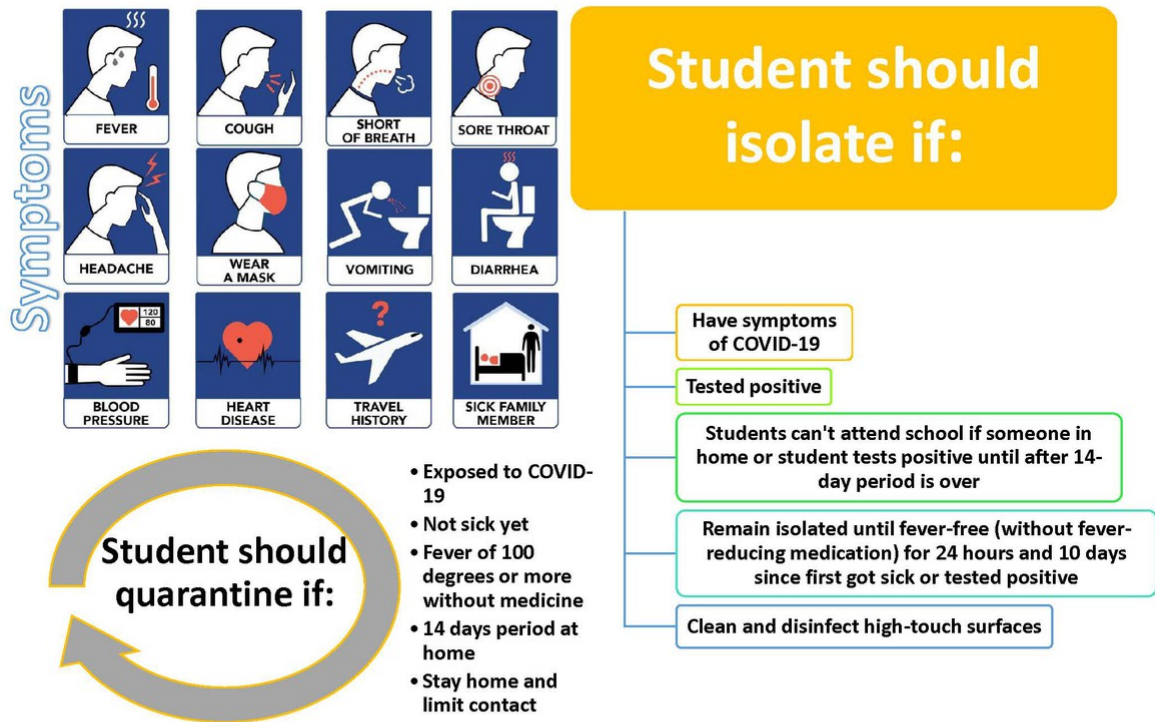
DRESS DOWN DAY & SPIRIT SHIRT DAY

Dress Down Day (\$2 donation) is the **LAST** Friday of the month. We had MANY kiddos show up yesterday in "street clothes". We were lenient this time and let kiddos remain in their dress down clothes. However, in the future, students who arrive to school in non-dress code apparel must either change into dress code clothes provided by the school (washed and returned to the school please) or must call home for parents to bring them the proper clothing.

Spirit Shirt Day is every Wednesday. On this day students can wear their Bullfrog shirt with dress code bottoms. You have **until** Sunday, September 13th to purchase a Spirit Shirt. The link to purchase a shirt is:

<https://www.customink.com/g/erz0-00cb-45hw>

Shirts will be delivered to the school and distributed to students towards the end of September. The next round of Spirit Shirts (in a different color) will be around November.



COVID SYMPTOMS AND COVID MITIGATION

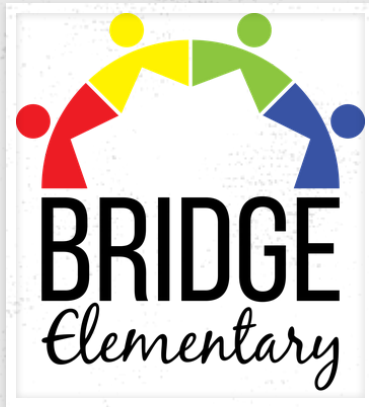
Please understand that teachers, administration and office staff are NOT medically trained. We are doing our very best to mitigate COVID at school. When your student comes to the office and presents with any of these symptoms (or simply tells us they have these symptoms), headache, sore throat, fever, shortness of breath, vomiting or feel they ARE going to vomit, or diarrhea, we call home and REQUIRE a person to come and pick the child up. This is for the safety of all staff and students.

We do have a very part-time school nurse who IS medically trained. If your child comes to the office and states they are unwell, and the nurse is on-site and can attend to the child, she can better determine if the child is okay to return to class after a drink or water and a short rest.

If your child has a persistent medical issue, such as nausea or a sore throat from sinus drainage, and your physician KNOWS this is not COVID related, please have your physician provide a letter to the school stating such. Unfortunately, as mentioned in the top paragraph, even if you as a parent know the symptom is NOT related to COVID our staff will err on the side of caution and require that the student go home. We know this is inconvenient and certainly NOT how schools have done business in the past - but, we are NOT living in "normal" times and in order to remain open with kids in seats, we must be diligent about COVID mitigation procedures at our school.

Additionally, if your student does not have a mask exemption provided by a medical Dr., he or

home. As a public school we are REQUIRED to follow the mandates provided by the State. We want to remain open and keep our staff and students as safe as possible and to do so we need to follow the required rules and have our parents support us in this endeavor. Please be understanding if we call you and require you to pick up your student because he or she will not comply with the mask-wearing policy or complains they are feeling ill.



BRIDGE ELEMENTARY

 Facebook

[Lani Rounds](#) - Principal (aka Academic Director) - "keeper of the mission and vision" - all things related to school culture and academics including teachers, para-educators and kids.

[Stacy Henry](#) - Director of Operations & Student Services - parking lot, recess, lunchroom, custodial, student behavior, 504 Plans.


[Julie Christensen](#) - Director of Special Education

[Sara Tucker](#) - BASE Coordinator, ELL students and online students

[Lalani Williams](#) - Lead Secretary - all things related to registration, enrollment, lottery, and day to day office procedures.

 4824 Midland Drive, Roy, UT, U...

 info@bridgecharter.org

 (801)499-5180

 BridgeCharter.org