

Upper Grove End of Year Intensives

6th, 7th, and 8th grade
camping Intensives



01

6th Grade

02

7th Grade

03

8th Grade

04

Help needed!

05

Chaperone Roles



01

6th Grade- Yellowstone National Park



6th Grade-

**Greenwood 6th graders will be going
to Yellowstone National Park and
staying in Island Park May 25th to
May 27th**



Harriman State Park

6th grade will be staying in Island Park
at Harriman State Park. They will be
staying in the Bunkhouse/ Dining Hall
and the Scovel Center the nights of
May 25th and May 26th



Yellowstone National Park

Students will be entering and exploring Yellowstone National Park May 25th and 26th.

- They will be connecting their learning with Utah SEED standard 6.4 Strand 6.4: Stability and Change in Ecosystems. They will be completing work to identify changes to Ecosystems, whether natural or human caused.
- Students will be hiking, sightseeing, and taking part in Ranger led interpretive activities.



Nature Trails

Some of the trails the students will explore while in Yellowstone include:

- Upper Geyser Basin (Easy 3 mile loop)
- Fairy Falls Trail (Intermediate 4.8 mile hike)
- Wapiti, south rim trail (Intermediate 4.7 mile hike)



02

**7th Grade-
Capitol Reef
National Park**



7th Grade- will be going to Capitol Reef May 24th to May 27th and camping at the Singletree Campground Group Site



Singletree Campground

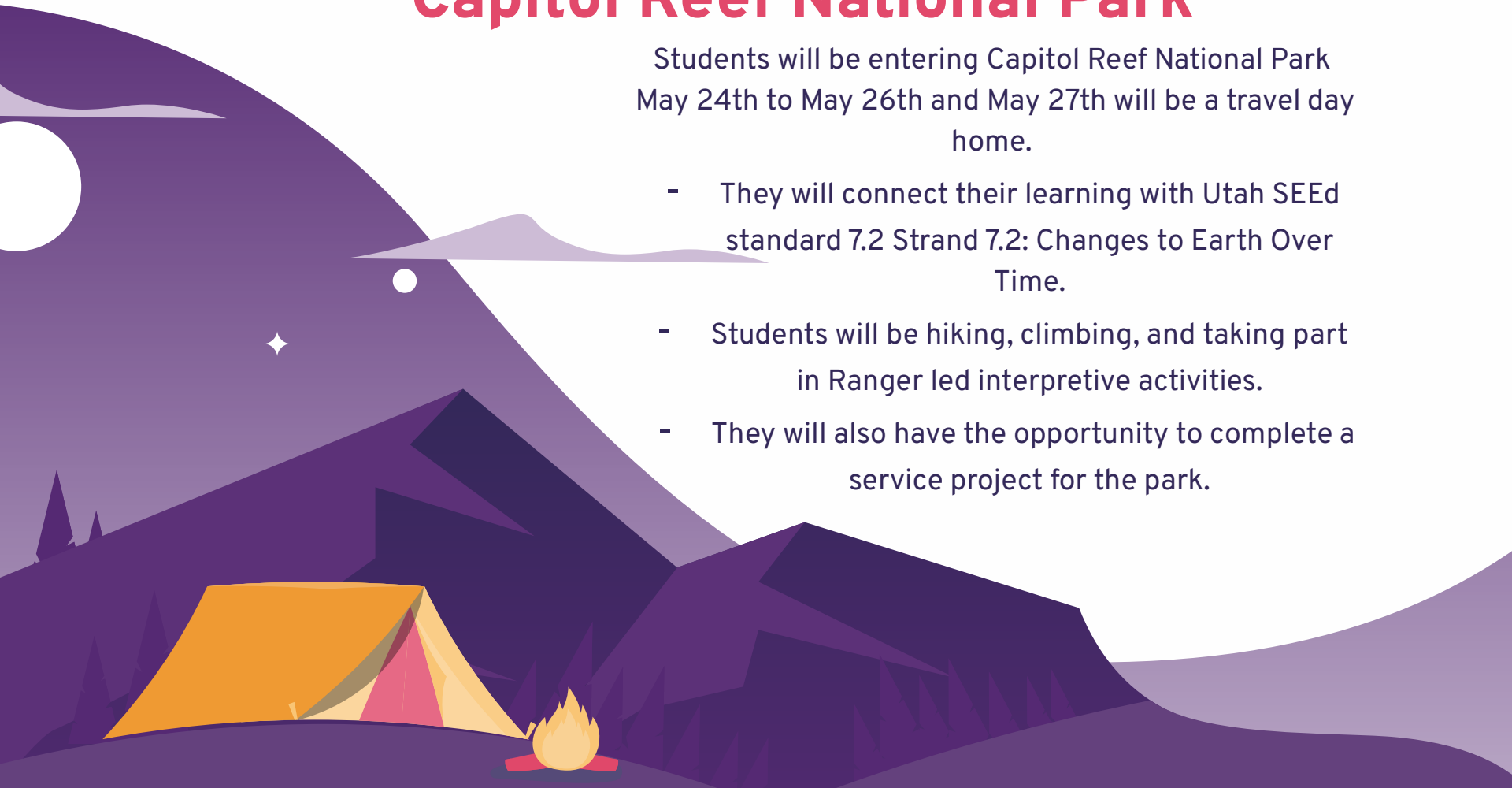
7th grade will be staying at the Singletree Campground in Fishlake National Forest near Capitol Reef National Park. We will utilize a group site to accommodate everyone and they will be staying in tents. We will camp the nights of May 24th to May 26th and head back to Greenwood on the 27th of May.



Capitol Reef National Park

Students will be entering Capitol Reef National Park May 24th to May 26th and May 27th will be a travel day home.

- They will connect their learning with Utah SEEd standard 7.2 Strand 7.2: Changes to Earth Over Time.
- Students will be hiking, climbing, and taking part in Ranger led interpretive activities.
- They will also have the opportunity to complete a service project for the park.



Big Rock Adventure Park- Marysvale, UT

May 24th on the way to our Campground

7th grade will stop at Big Rock Adventure Park to take part in the Adventure Mountain + Zipline course. We will go in groups and there will be activities and games while we wait or finish early.



03

**8th Grade-
Dinosaur National
Monument and
Flaming Gorge**



8th Grade- will be going
to Vernal May 23rd to May
26th and camping in
Dinosaur National
Monument and exploring
Flaming Gorge

**DINOSAUR
NATIONAL MONUMENT
FOSSIL BONE QUARRY**





Split Mountain Group Campground- Dinosaur National Monument

8th Grade-

Will be camping in Dinosaur National Monument at the Split Mountain Group Campground in two separate, but adjoining group sites. We will camp the nights of May 23rd to May 25th and travel home on May 26th.

Dinosaur National Monument and Flaming Gorge

Students will be camping in and exploring Dinosaur National Monument, and visiting Flaming Gorge May 23rd to May 26th

- Students will connect their learning with Utah SEEd Standard 8.4
Strand 8.4: Interactions with Natural Systems and Resources.
- They will be hiking, taking part in interpretive activities, and rafting to see how we interact with and are impacted by natural resources in our area.



Whitewater Rafting on the Green River

Adrift Adventures

8th grade will be going Whitewater Rafting with Adrift Adventures on the Green River in the Split Mountain Gorge



04

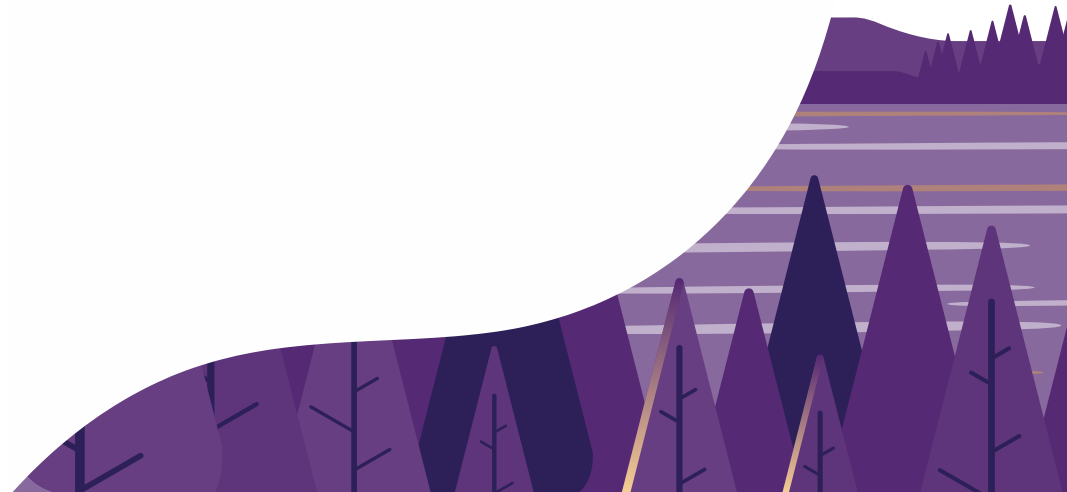
Help Needed!

What we need to make
this happen and how you
can help!



NEEDS

1. Chaperones and Parent Drivers
 - a. To make this happen we need:
 - i. 10 Chaperones/ Drivers for 6th Grade
 - ii. 8 Chaperones/ Drivers for 7th Grade
 - iii. 10 Chaperones/ Drivers for 8th Grade
2. Trailer or Trucks to bring equipment
3. Group Camping Gear
 - a. Pots/pans
 - b. Stoves
 - c. Tents- Largest possible
 - d. Coolers and Water Jugs
4. Camping Skills/ Expertise



05

Chaperone Roles

Expectations and
assisting the group



Chaperones Roles

We are so fortunate to have parent volunteers that can assist us so that we can provide this great learning experience for our Upper Grove Students. Chaperones are vital to us being able to have a successful and fun experience at each of these amazing places.

We need Chaperones that can-

1. Drive and transport students to and from the places we are visiting
2. Assist in cooking and logistics while in camp
3. Help facilitate the trip leaders directives
4. Provide unique skills, experiences, and leadership
5. Be a positive role model



Chaperone Responsibilities

Parent chaperones provide faculty sponsored fieldwork with important additional adult presence, increasing the safety and enjoyment of all the students participating on the excursion. Although we want everyone to enjoy the experience, it must be understood that **the well-being and safety of the children is our first priority.** Parental understanding and acceptance of certain basic expectations is an important ingredient in a successful fieldwork excursion.

Chaperone Behavior Guidelines

1. It is essential for the well-being and safety of the children that chaperones clearly understand what is expected of them and that they comply with the classroom teachers' requests throughout the excursion.
2. A chaperone's primary focus is on supervising the students assigned to him/her. The safety of our children requires total concentration of all teachers and chaperones.
3. **Chaperones** serve as role models of appropriate behavior, and they are expected to intervene promptly if students need to behave more appropriately. It is GreenWood policy that drinking alcoholic beverages, smoking or being under the influence of illegal drugs is prohibited for all chaperones, at all times, on ALL school sponsored fieldwork.
4. **Chaperones** are expected to exhibit a high degree of judgment and maturity. Conduct that may be appropriate or tolerated between the chaperone and his or her own child may not be appropriate or tolerated when monitoring a group of students.
5. **Chaperones** are to ensure there is sufficient adult supervision at all times.

Chaperone - Student Behavior Guidelines

6. **Chaperones** are expected to remain with the whole class group. If the teachers assign a small group of students to each chaperone, that chaperone is to remain with the assigned group throughout the event. Frequent head counting, to ensure that all students in the group are present, is essential.
7. Conscientious supervision must be the top priority so, a chaperone might need to miss part of a performance or activity while, for instance, escorting a student to the restroom or monitoring a student for a teacher.
8. **Avoid** the appearance of favoritism.
9. **Avoid** situations where the chaperone is alone with a student. Chaperones should practice a policy of working in concert with another chaperone when interacting directly with a student. If you need to speak with a student apart from the group, *always* be in visual site of, and close proximity to the group.
10. Any serious issues should be discussed with a teacher prior to confronting the student, unless time is not possible.
11. **Prevent** inappropriate behaviors (loud or unruly behavior, inappropriate sexual conduct, inappropriate language, offensive or discriminatory activities).
12. Students are not allowed to have electronics. Chaperones should support this policy by letting a teacher know if a student has any electronic devices. You should not take the electronic device. Please let the teacher know and they will handle the situation.

Chaperone Transportation Behavior Guidelines

13. If transportation is by Greenwood private vehicles, chaperones serving as chauffeurs are expected to drive safely and in compliance with speed limits and other vehicular laws. Relying on staying close to another vehicle or the school bus to arrive at the destination, jeopardizes the safety of your passengers, therefore, it is the parent's responsibility to understand the directions to the destination, and to seek clarification from the teachers **prior** to the fieldwork.
14. All students in private vehicles must be properly seat belted, and the parent chaperone should clarify guidelines for conduct in the car.
15. Parent chauffeurs are required to take and pass the State of Utah Division of Risk Management Drivers Test prior to departing on fieldwork.
16. Parent chauffeurs are requested to avoid stops to and from the destination for food or beverages unless teacher permission is granted for **all** students.
17. Any questions or concerns should be brought to the sponsoring teachers right away.

Chaperone Overnight Behavior Guidelines

18. Greenwood handbook mandates the adult supervision requirements for overnight fieldwork:

SUPERVISION RATIOS **Day Fieldwork** An adult to student ratio of no more than 8:1 and the principle of two deep adult leadership will be maintained on all day trips. Exceptions to the student/adult ratio may be granted or required by administration on a case-by-case basis. No one-on-one grouping of adult with student. If, for instance, a private conference is needed, this must be done in view of other adults and students unless it is a parent-child relationship. **Overnight Fieldwork** Student to Chaperone ratios are as follows: Large Group*: 5-8= Day Adventure: 8:1 and enough for two adults per tent in large tent sleeping arrangements at night. Small Group: 5-8=Day Adventure: 8:1 and enough for one adult within TEN feet of each student tent at night.

*Large group indicates over 25 students and a permanent “home base” camp where large tent lodging is possible. Small group indicates under 25 students and moving location (i.e. backpacking).

SLEEPING ARRANGEMENTS Opposite gender camps shall be clearly separated from one another. Care will be given by staff to assign or change sleeping arrangements to insure the safety of all students. **Tent Lodging:** Two or more adult chaperones/teacher(s) may share a large tent with students, provided that the sleeping arrangements for the adults and students are separated by three feet and adults are able to monitor both the activity within the tent and the activity entering and leaving the tent.

A large tent is big enough for two chaperones to share a tent with 3 ft. separation between adults and students. When large tent scenarios are not possible, chaperones/teachers must sleep separate from students, but be within ten feet of the student tent. Same guideline applies to no tent camping (i.e. backpacking). Chaperones may sleep in the same tent with their own child(ren) and no others.

Overnight Guidelines Continued

It is required of the parent chaperone to acknowledge, accept and adhere to the policy.

19. Chaperones should monitor and be aware of student's activities throughout the night. Before you retire for the night, you will be expected to confirm that all the students in your group are in their room/tent.

20. There is NO tolerance for bullying, initiations, etc.

21. Certain guidelines and procedures are put in place by teachers and administrators very deliberately to ensure student safety. Please consistently support these decisions.

Chaperone - Teacher Behavior Guidelines

- 22. While on fieldwork you, as a chaperone, are there to assist the teacher in creating safe learning environments.
- 23. **Chaperones** are not to act as teachers or to interfere with the teacher when he or she is performing (appropriately) in the role as a teacher.
- 24. **Chaperones** are expected to support teacher designed curriculum at all times as it is essential for student mastery of critical learning targets.
- 25. The chaperone should not normally engage in any discipline, confrontation, or rebuking of a student.
- 26. In the case of an emergency, your role as a chaperone is to aid and assist the teacher in **whatever task you are assigned**. Please do not question what you are asked to do. Everyone will play a vital part in executing a successful emergency plan, please fulfill the task you are given.

Schedule

We will have a detailed schedule and packet of information for you the morning we leave. This packet will have all of your group information in it.

Please arrive by 8:00 a.m. to get your volunteer badge.

We will be leaving Greenwood no later than 8:30 a.m.

Chaperones can stop as needed for gas, bathroom breaks, and lunch. We will expect you at your first meeting location at the time dictated by the trip leader (this will vary per grade level trip).

Odds and Ends

Tonight please make sure you do the following:

- Check the sheet we have to see whether or not you have your insurance and driver's license turned in.
- Make sure you sign your chaperone form and turn it in. Please let us know if you have questions.
- Not all chaperones will be driving their own car. We will organize chaperones and groups based on seats available. All drivers should be prepared to be assist in driving.

Questions?